

J'Tracks “Premium” Rubber Tracks

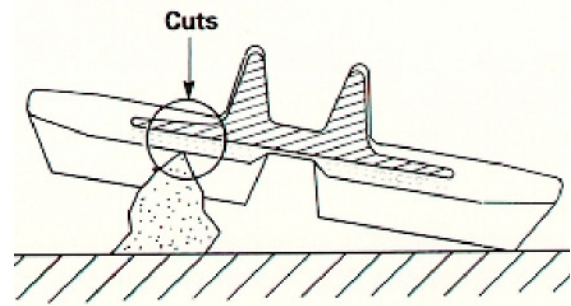
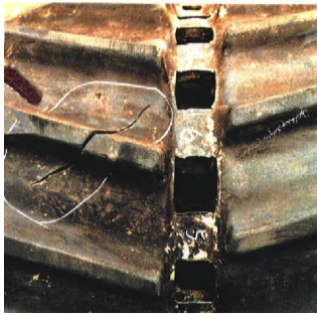
Premium Natural and Synthetic Rubber Compounds

3 Main Reasons for Premature Rubber Track Failure

Cuts Caused by Sharp Stones or Concrete

If cuts caused by running over sharp objects, especially in between the tread lugs, are deep enough to expose the embedded steel cables, this may result in steel cable breakage.

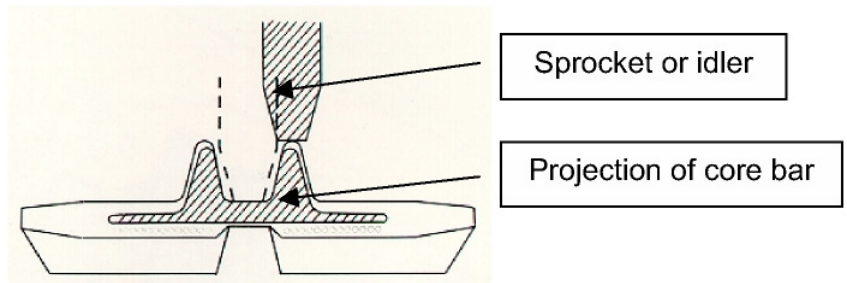
· *J'Track MB Skid Steer Tracks* have less recessed area between the lugs, less chance of cutting.



De-tracking of Rubber Track due to Stretching or Track Tension Too Loose

A rubber track clogged with sand, dirt, stones or foreign objects is more likely to stretch or de-track, especially when turning. This can tear the rubber and can cause the steel cables to break.

· *J'Tracks* are produced with **Continuous Wound Interlocked Cables** resulting in over 40% more lengthwise strength than overlapping cable tracks & stronger than standard continuous cables.



Tearing Out of Embedded Metals

When a rubber track de-tracks or when the machine moves over curbs, pipes, or other obstacles, especially when the tension is too low, the metal bars can hit the frame of the undercarriage and can cause tearing out of the metals. Keep tracks at the correct tension & avoid uneven surfaces.

· *J'Tracks* special process bonds the rubber to the metal bars, so they are less likely to pull out.

